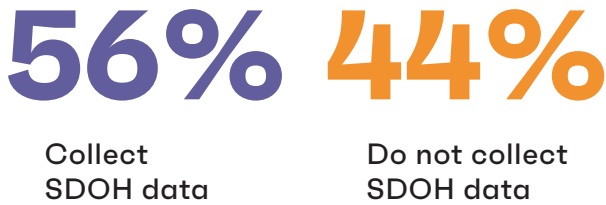


2020 AHIMA SOCIAL DETERMINANTS OF HEALTH (SDOH) SURVEY

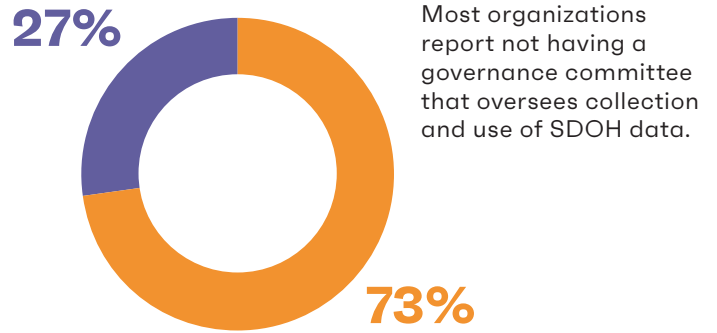


DATA COLLECTION

Q: Does your organization collect SDOH data?



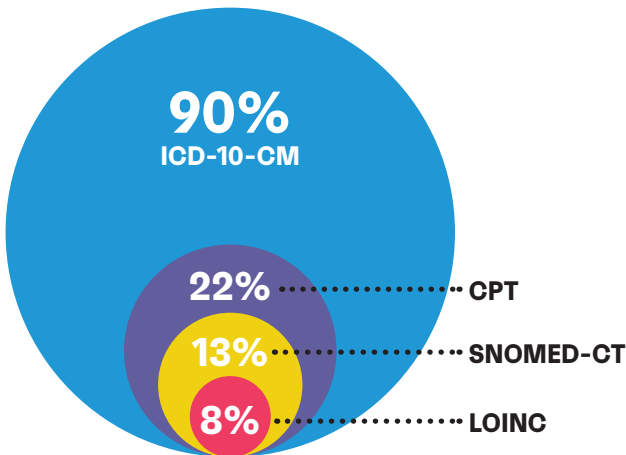
DATA GOVERNANCE



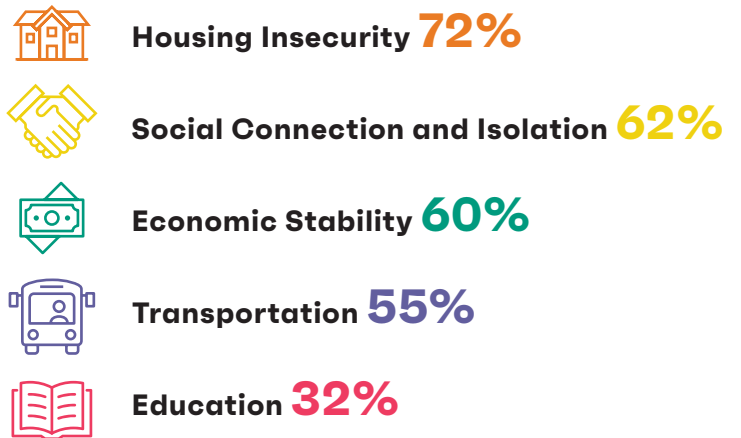
ROLE(S) WITHIN THE ORGANIZATION THAT COLLECT AND USE SDOH DATA



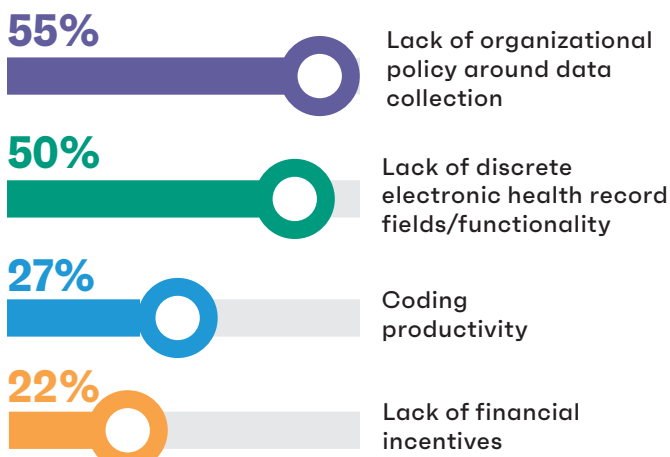
COMMON CODING/CLASSIFICATION/TERMINOLOGY SYSTEMS USED TO COLLECT SDOH DATA



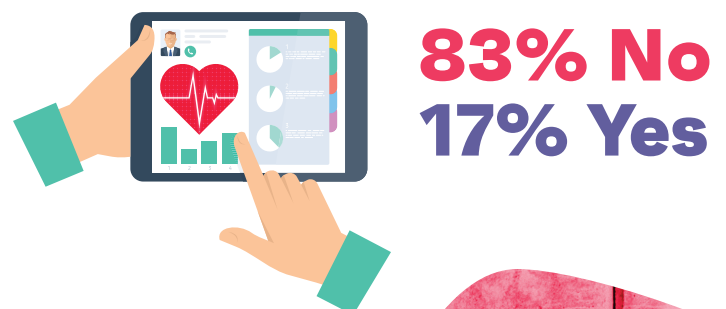
WHICH SOCIAL RISK CATEGORIES BELOW ARE PRIORITIZED FOR COLLECTION?



CHALLENGES IN COLLECTING SDOH DATA



Q: DOES YOUR EHR TECHNOLOGY INCLUDE ALERTS/TRIGGERS TO NOTIFY CLINICIANS THAT DOCUMENTATION HAS BEEN CAPTURED SUCH AS FOOD OR HOUSING INSECURITY?



Survey methodology

- 13 questions, web-based survey administered in June 2020.
- Sample of 17,900 health information professionals