

# Are You *Maximizing* the Power of Your Information?

Use IGHealthRate™, AHIMA's IGAdvisors™ standard tool for assessing information governance (IG) maturity. IGHealthRate™ assists in your organizational efforts to improve performance, by supporting IG programs from startups to existing IG programs.

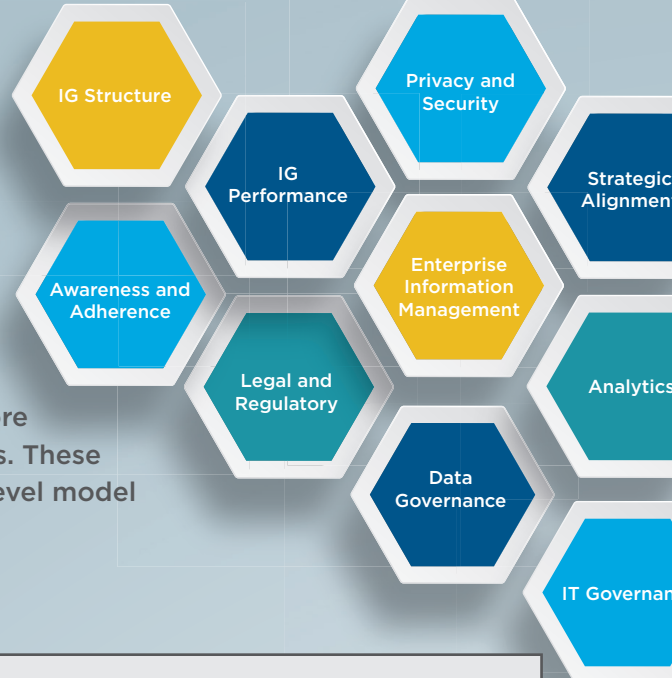


For more information visit [IGHealthRate.com](http://IGHealthRate.com) or call (844) 554-4447.

# Assess the Health of Your Information

IGHealthRate™ is aligned with AHIMA's Information Governance Adoption Model (IGAM™), the only recognized and accepted industry focused IG model for healthcare.

IGAM™ is built using leading practices in IG and the AHIMA-developed organizational IG competencies, and incorporates more than 85 maturity markers or indicators of maturity in IG practices. These markers enable identification of maturity level, based on a five-level model across all 10 competencies.



<b>IG STRUCTURE</b>	Creates the information governance program including executive sponsorship, IG committee, and policies and procedures to support the program
<b>STRATEGIC ALIGNMENT</b>	Ensures that the information governance program strategy aligns with the organizations strategy, mission, vision and goals
<b>PRIVACY AND SECURITY</b>	Protects information across all types of information, all media, throughout the lifecycle
<b>LEGAL AND REGULATORY</b>	Verifies a proper, accurate, reliable, efficient response to regulatory audits, information requests, and eDiscovery
<b>DATA GOVERNANCE</b>	Ensures usable and reliable data through comprehensive and proven data management practices.
<b>IT GOVERNANCE</b>	Strives for risk reduction through an integrated approach to technology selection, evaluation, and use
<b>ANALYTICS</b>	Proves the value of information governance and contributes to a data-driven decision-making culture in the organization through use of advanced tools and technologies
<b>ENTERPRISE INFORMATION MANAGEMENT</b>	Guides practice for information through the information lifecycle across the healthcare ecosystem
<b>IG PERFORMANCE</b>	Measures the performance and impact of the IG program
<b>AWARENESS AND ADHERENCE</b>	Creates a path for trusted information and safe use of health IT through consistent behavior with respect to information use, sharing, handling, access, storage, retention, and disposition.